

RESEARCH

Open Access



# Bioinformatics analysis of immune characteristics in tumors with alternative carcinogenesis pathways induced by human papillomaviruses

Michal Smahel<sup>1\*</sup> and Jaroslav Nunvar<sup>1</sup>

## Abstract

**Background** Human papillomaviruses (HPVs) induce a subset of head and neck squamous cell carcinomas (HNSCC) and anogenital cancers, particularly cervical cancer (CC). The major viral proteins that contribute to tumorigenesis are the E6 and E7 oncoproteins, whose expression is usually enhanced after the integration of viral DNA into the host genome. Recently, an alternative tumorigenesis pathway has been suggested in approximately half of HNSCC and CC cases associated with HPV infection. This pathway is characterized by extrachromosomal HPV persistence and increased expression of the viral E2, E4, and E5 genes. The E6, E7, E5, and E2 proteins have been shown to modify the expression of numerous cellular immune-related genes. The antitumor immune response is a critical factor in the prognosis of HPV-driven cancers, and its characterization may contribute to the prediction and personalization of the increasingly used cancer immunotherapy.

**Methods** We analyzed the immune characteristics of HPV-dependent tumors and their association with carcinogenesis types. Transcriptomic HNSCC and CC datasets from The Cancer Genome Atlas were used for this analysis.

**Results** Clustering with immune-related genes resulted in two clusters of HPV16-positive squamous cell carcinomas in both tumor types: cluster 1 had higher activation of immune responses, including stimulation of the antigen processing and presentation pathway, which was associated with higher immune cell infiltration and better overall survival, and cluster 2 was characterized by keratinization. In CC, the distribution of tumor samples into clusters 1 and 2 did not depend on the level of E2/E5 expression, but in HNSCC, most E2/E5-high tumors were localized in cluster 1 and E2/E5-low tumors in cluster 2. Further analysis did not reveal any association between the E2/E5 levels and the expression of immune-related genes.

**Conclusions** Our results suggest that while the detection of immune responses associated with preserved expression of genes encoding components of antigen processing and presentation machinery in HPV-driven tumors may be markers of better prognosis and an important factor in therapy selection, the type of carcinogenesis does not seem to play a decisive role in the induction of antitumor immunity.

**Keywords** Papillomavirus, Carcinogenesis, Immunotherapy, STING, LILR

\*Correspondence:

Michal Smahel  
smahelm@natur.cuni.cz

<sup>1</sup> Department of Genetics and Microbiology, Faculty of Science, Charles University, BIOCEV, 252 50 Vestec, Czech Republic



© The Author(s) 2023. **Open Access** This article is licensed under a Creative Commons Attribution 4.0 International License, which permits use, sharing, adaptation, distribution and reproduction in any medium or format, as long as you give appropriate credit to the original author(s) and the source, provide a link to the Creative Commons licence, and indicate if changes were made. The images or other third party material in this article are included in the article's Creative Commons licence, unless indicated otherwise in a credit line to the material. If material is not included in the article's Creative Commons licence and your intended use is not permitted by statutory regulation or exceeds the permitted use, you will need to obtain permission directly from the copyright holder. To view a copy of this licence, visit <http://creativecommons.org/licenses/by/4.0/>. The Creative Commons Public Domain Dedication waiver (<http://creativecommons.org/publicdomain/zero/1.0/>) applies to the data made available in this article, unless otherwise stated in a credit line to the data.

## Background

Human papillomaviruses (HPVs) are associated with approximately 4% of human cancers worldwide [1]. They are involved in nearly all cases of cervical carcinoma (CC) and up to 35% of head and neck squamous cell carcinoma (HNSCC) [2]. The incidence of HPV-induced cancers is still increasing, particularly oropharyngeal cancers [3, 4]. A significant reduction in HPV-driven carcinomas due to preventive vaccination is expected after 2050 [5].

Of the more than 200 HPV types identified, approximately 15 types are considered to be high-risk with respect to malignant tumor development [6]. The viral proteins E6 and E7 are the major viral oncoproteins, but the oncogenic potential of the E5 protein has also been recognized [7]. These viral oncoproteins interact with numerous cellular proteins and influence various cancer hallmarks [7, 8]. Integration of the HPV genome into the host DNA is considered an important step in carcinogenesis, where the viral E2 gene is usually disrupted and the expression of the E6 and E7 oncogenes is enhanced [9]. In addition, the expression of cellular genes in the vicinity of an integration site may be altered, thereby supporting carcinogenesis [10].

Ren et al. characterized an alternative HPV carcinogenesis pathway that is not dependent on E6/E7 expression and viral genome integration but is driven by episomal expression of the E2, E4, and E5 genes [11]. They identified this subtype of carcinogenesis in approximately half of HPV-positive cervical and pharyngeal cancers, demonstrated activation of fibroblast growth factor receptor signaling, and verified alternative carcinogenesis in *in vitro* and *in vivo* models. The effect of the E2/E4/E5 pathway on cell proliferation and survival was p53 dependent, which may be mediated by E2 binding [12, 13]. In HNSCC, patients with E2/E4/E5 carcinogenesis had a slightly worse prognosis than those with E6/E7 carcinogenesis, but the difference was not significant.

Since immunotherapy is increasingly used against cancer, the immunological characteristics of tumors are being studied to identify prognostic and predictive biomarkers and therapeutic targets. HPV proteins affect both innate and adaptive immune responses and contribute to tumor escape from host immunity [7, 14]. Therefore, the different levels of HPV oncoproteins associated with the two alternative pathways of carcinogenesis may provide a basis for different therapeutic targets and responses to immunotherapy. To reveal possible immunological variance between tumors with high or low E2/E4/E5 expression, we performed bioinformatics analysis of transcriptomic datasets of HNSCC and CC samples.

## Materials and methods

### Sample selection

CC and HNSCC tumor samples from The Cancer Genome Atlas (TCGA Research Network: <https://www.cancer.gov/tcga>) were evaluated based on their expression of HPV genes as determined by Ren et al. [11]. A total of 138 and 54 CC and HNSCC samples, respectively, with robust expression of HPV16 genes (> 1,000 HPV16-derived sequencing reads) were selected for further analysis (Additional file 1: Table S1). The precomputed gene expression values (fragments per kilobase of transcript per million mapped reads upper quartile, FPKM-UQ) for each tumor sample were collected from TCGA.

### Sample clustering

From the numbers of sequencing reads mapping to the HPV16 genes E2, E5, E6 and E7 [11], the relative abundances of corresponding transcripts were calculated. Based on the relative expression of E2 and/or E5, tumor samples were divided into “E2/E5-high” and “E2/E5-low” groups with >10% and <10% proportion of E2 + E5 among total HPV transcripts, respectively.

For immunological grouping of tumor samples, unsupervised clustering was performed based on the top 1,200 expressed genes from the Gene Ontology (GO) category “GO:0002376—immune system process”. Samples were clustered using correlation distance and complete linkage [15].

### Group comparisons

Differential gene expression between sample groups was calculated as the ratio of mean normalized expression values at the cBioPortal for Cancer Genomics [16, 17]. Enrichment analysis was performed with at least two-fold up- or downregulated genes using Enrichr [18–20]. Tumor-infiltrating immune cells were estimated from the TCGA bulk tumor transcriptomes by deconvolution with CIBERSORTx [21]. Scores of absolute levels were calculated after batch correction (B-mode) using the LM22 signature matrix and 1000 permutations. Comparison of survival between sample groups was calculated using the cBioPortal for Cancer Genomics [16, 17]. Immunophenoscore values [22] were obtained from The Cancer Immunome Atlas (TCIA).

### Statistical analysis

The difference between groups was calculated by two-way analysis of variance and Fisher’s least significant difference test for multiple comparisons using Prism 8.4

software (GraphPad Software, San Diego, CA, USA). A  $p$  value  $<0.05$  was considered statistically significant.

## Results

### Delineation of tumor sample groups with different immune-related expression profiles

The CC and HNSCC tumor samples in the TCGA database were previously characterized with respect to HPV status by Ren et al. [11]. For consistency, only samples expressing HPV16, the most common high-risk HPV type [23], were selected for our analysis. Among these, only tumor samples with robust expression of HPV genes were retained. This resulted in 138 and 54 samples of CC and HNSCC tumors, respectively.

Since the type and intensity of immune infiltration of the tumor microenvironment is a crucial factor affecting patient prognosis and treatment efficacy [24], we performed unsupervised clustering on tumors of each anatomical location based on the expression of immune-related genes (GO:0002376 “immune system process”). This revealed the presence of three and two clusters within the diversity of the CC and HNSCC samples, respectively (Fig. 1A). Cluster 3 of CC samples was predominantly composed of nonsquamous cell neoplasms (adenocarcinomas), reflecting the distinctness of global expression profiles of cervical adenocarcinomas [25]. The division of squamous cell CC samples into two clusters also reflected the clustering of their global expression profiles [26]. Nonsquamous CCs were excluded from subsequent analyses.

We then compared the expression patterns of HPV genes (E2, E5, E6 and E7) between clusters of samples. Both CC and HNSCC datasets consisted of a similar proportion of samples with negligible/low ( $<10\%$ ) and high ( $>10\%$ ) expression of E2/E5. In squamous CCs, both cluster 1 and cluster 2 showed a similar representation of HPV expression patterns (60% and 49% of E2/E5-high samples, respectively). In contrast, HNSCC clusters 1 and 2 consisted predominantly of E2/E5-high (93%) and E2/E5-low samples (61%), respectively.

Differential expression of all genes was used for enrichment analysis comparing samples in clusters 1 and 2 (Fig. 1B). In both tumor types, activation of immune responses was found in cluster 1, and keratinization was a major feature of cluster 2, which was associated with upregulation of oncostatin M, interleukin (IL)-36, and IL-17 signaling.

Survival analysis showed a better overall survival (OS) of patients in cluster 1, which reached statistical significance in CC ( $P=0.05$ ). Patients with high E2/E5 expression had slightly better OS than patients with low E2/E5 expression, and this difference was similar in both tumor types.

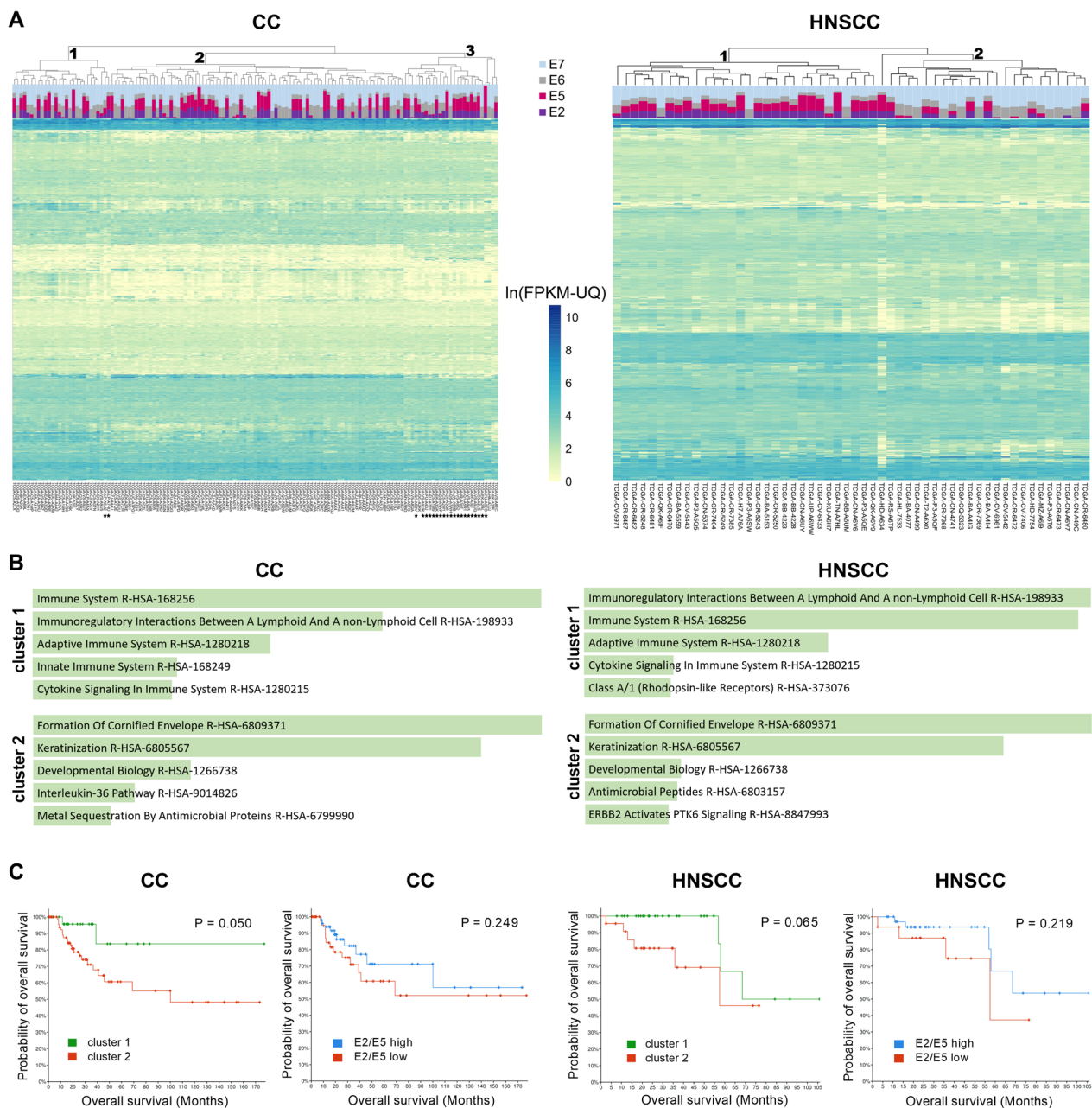
### Tumor-infiltrating leukocytes

To estimate the immune cell infiltration of CC and HNSCC tumors, we analyzed bulk RNA-seq data with CIBERSORTx (Fig. 2A). For both cancer types, the infiltration of cluster 1 tumors was almost twice that of cluster 2 tumors, and significant differences were observed mainly in cluster of differentiation (CD)  $8^+$ ,  $CD4^+$  memory activated, follicular helper, and regulatory T cells, as well as in M1 and M2 macrophages (Fig. 2B). When comparing E2/E5-high and E2/E5-low tumors, groups of CC samples showed comparable infiltration, but in HNSCC, the samples with high E2/E5 expression were more infiltrated with immune cells. This difference was not as large as the difference between clusters 1 and 2. While remarkably higher levels of B cells and follicular helper T cells were found in HNSCC tumors, more T cells and activated natural killer (NK) cells infiltrated the CC tumors.

### Characterization of tumor subtypes

Several transcriptomic studies have analyzed the effect of HPV16 early protein expression in keratinocytes and identified upregulated and downregulated cellular genes. To further investigate the role of high E2 and E5 expression in a subset of CC and HNSCC tumors, we used the genes previously reported to be regulated by E2 [27, 28] or E5 proteins [29]. In addition, because the E5 oncoprotein has been shown to attenuate transforming growth factor (TGF)- $\beta$  signaling, which is important for epithelial carcinogenesis [30, 31], we also evaluated this pathway using genes listed for TGF- $\beta$  signaling in the Molecular Signatures Database (MSigDB; <https://www.gsea-msigdb.org/gsea/msigdb>). Unsupervised clustering did not reveal any association of the increased E2/E5 expression in CC or HNSCC samples with the expression of E2-regulated genes, E5-regulated genes or TGF- $\beta$  signaling pathway genes (Fig. 3).

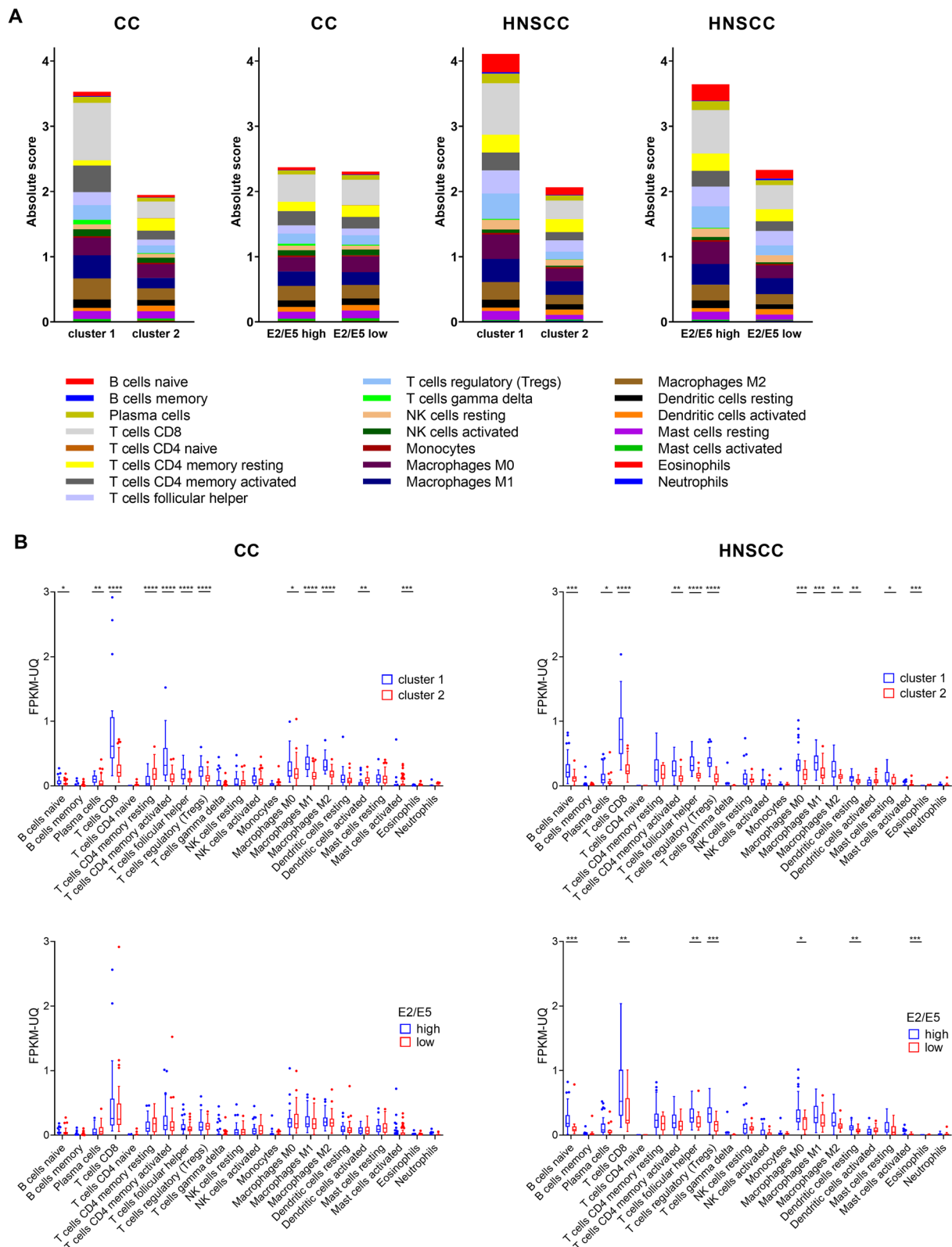
Next, we compared the expression of two categories of immune-related genes that are critical for the composition and functionality of the tumor microenvironment: chemokines and their receptors and immune checkpoints (Fig. 4). More genes in both categories had significantly different expression when comparing the cluster 1 and cluster 2 samples than when comparing E2/E5-high and E2/E5-low tumors. This difference was more pronounced in CC. The chemokines CCL5, CCL19, and CXCL9 and the immune checkpoints CD40, IDO1, and LGALS9 were highly upregulated in cluster 1 of both CC and HNSCC, whereas CXCL10 was dominant in cluster 1 only in CC and CCL21 only in HNSCC. The expression of any chemokine or immune checkpoint was not specifically associated with the level of E2/E5 expression.



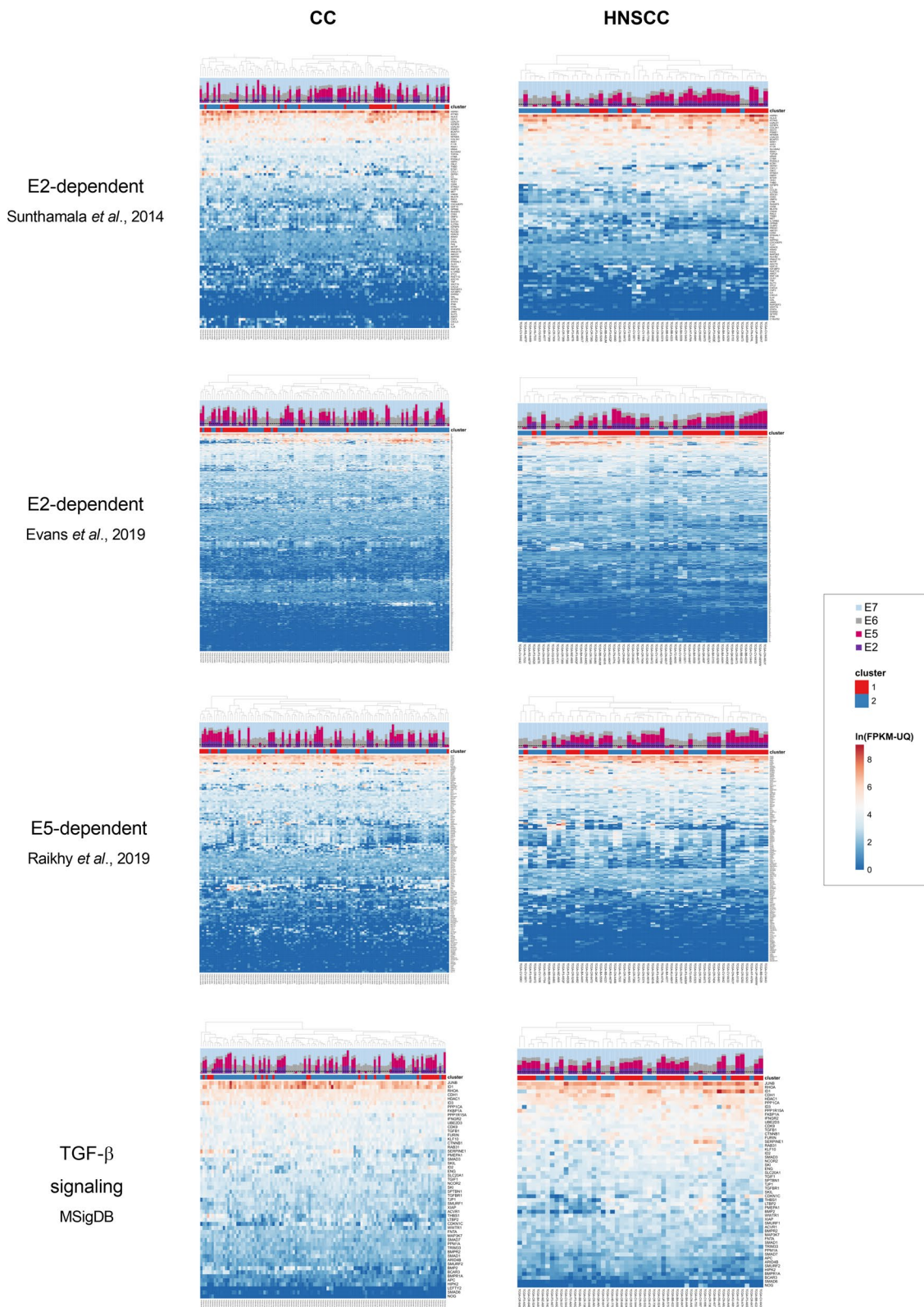
**Fig. 1** Clustering of HPV-driven tumors. **A** Samples of cervical carcinoma (CC) and head and neck squamous cell carcinoma (HNSCC) from The Cancer Genome Atlas were clustered based on the similarity of their expression profiles of immune-related genes. Relative proportions of HPV transcripts (E2, E5, E6 and E7) are shown. Cluster numbers are denoted at corresponding nodes. Nonsquamous CC samples are marked with asterisks. **B** Differences between clusters 1 and 2 were evaluated by enrichment analysis with the Enrichr tool using all genes with upregulated expression ( $\geq 2$ ) in clusters 1 and 2. Reactome identifiers were sorted by p value ranking. **C** Survival analysis from cBioPortal comparing patients from clusters 1 and 2 or patients with high and low E2/E5 expression

Components of the antigen processing and presentation (APP) pathway are crucial for the immunogenicity of tumor cells and their recognition and elimination by adaptive immunity. Since papillomavirus proteins may affect the expression of some of these components, we

selected APP genes from the GO database (GO:0019882) and evaluated their expression in CC and HNSCC samples. In both tumor types, unsupervised clustering revealed two groups of samples (designated H and L, for high and low APP expression, respectively) that were not

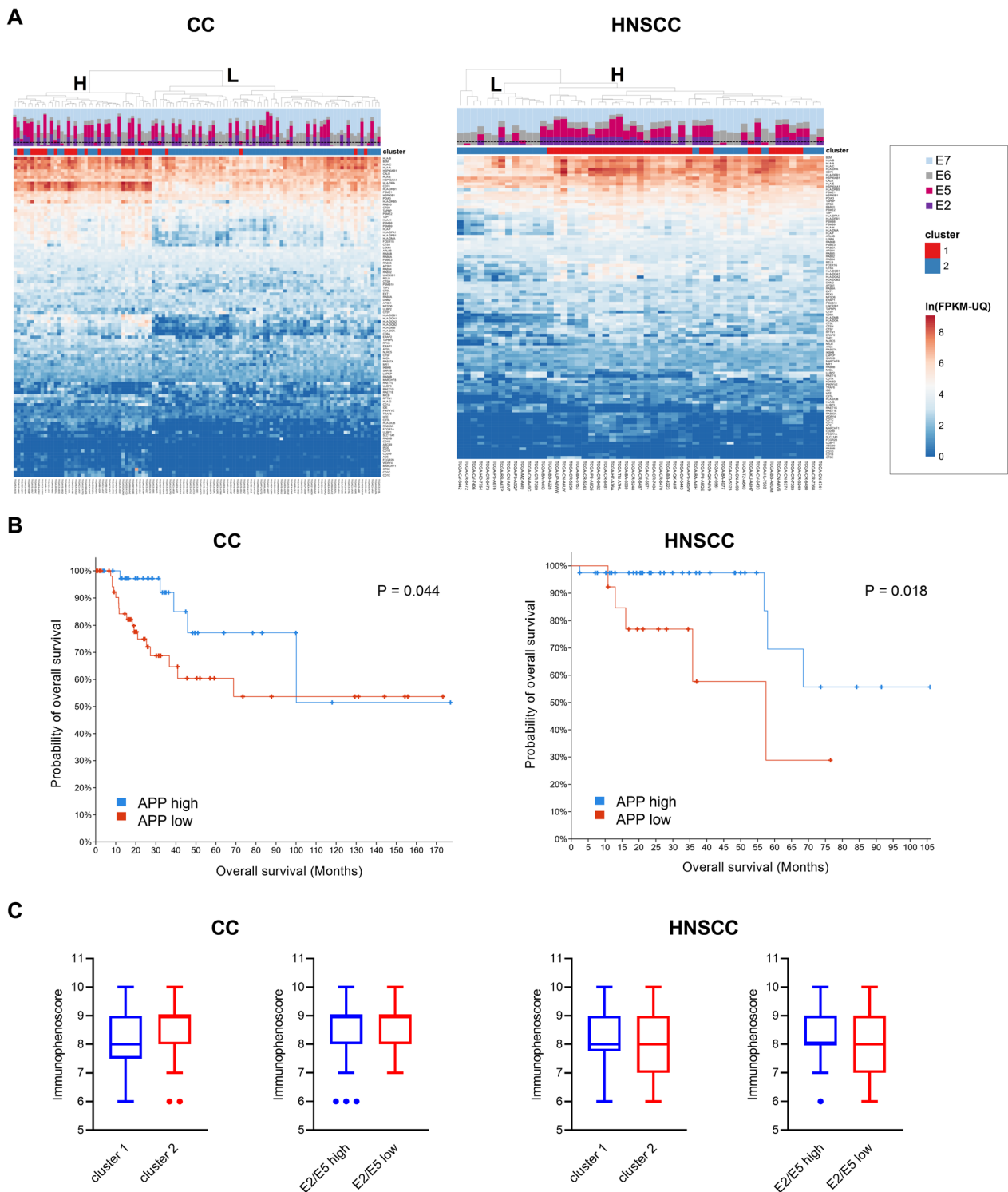


**Fig. 2** Tumor-infiltrating leukocytes. Transcriptomes of CC and HNSCC tumors were analyzed with CIBERSORTx to estimate infiltrating immune cells and compare their levels between samples from clusters 1 and 2 or groups with high and low E2/E5 expression. **A** Overview of infiltrating cell composition. **B** Statistical comparison of cell types. FPKM-UQ, fragments per kilobase of transcript per million mapped reads upper quartile; \* $p < 0.05$ , \*\* $p < 0.01$ , \*\*\* $p < 0.001$ , \*\*\*\* $p < 0.0001$



**Fig. 3** Expression of genes regulated by E2 or E5 proteins. Unsupervised clustering of HPV-expressing CC and HNSCC tumor samples was based on the expression patterns of E2-regulated, E5-regulated, and TGF- $\beta$  signaling genes. Relative proportions of HPV transcripts (E2, E5, E6 and E7) are shown; the threshold that separates the E2/E5-high and E2/E5-low tumors is delineated by dashed lines





**Fig. 5** Immunogenicity of tumors. **A** Unsupervised clustering of HPV-expressing CC and HNSCC tumor samples based on the expression of antigen processing and presentation (APP) pathway components. Relative proportions of HPV transcripts (E2, E5, E6 and E7) are shown; the threshold that separates the E2/E5-high and E2/E5-low tumors is delineated by dashed lines. **B** Survival analysis compared patients from clusters with high (H) or low (L) expression of APP genes. **C** Immunophenoscore was obtained from The Cancer Immunome Atlas. Median values are indicated



CD8<sup>+</sup> T cells, (ii) infiltration with immunosuppressive cells (regulatory T cells and myeloid-derived suppressor cells), (iii) expression of major histocompatibility (MHC) class I, class II, and nonclassical molecules, and (iv) expression of costimulatory and coinhibitory molecules (mostly immune checkpoints). However, the comparison of IPS values obtained from TCIA did not show a significant difference even for clusters 1 and 2 (Fig. 5C).

## Discussion

Identification of molecular subtypes of tumors reveals biological differences that have important implications for cancer prognosis and treatment. In HNSCC, these studies have mostly focused on differences between HPV<sup>+</sup> and HPV<sup>-</sup> tumors, but heterogeneity in HPV<sup>+</sup> tumors has also been investigated [32]. Two basic molecular subtypes have been identified in HPV<sup>+</sup> tumors of both HNSCC [33–35] and CC [36] tumor types: (i) immune strong and (ii) highly keratinized (in terms of the reference [35]). A meta-analysis of 11 studies stratified highly keratinized HNSCC tumors into two subtypes: (i) epithelial-mesenchymal transition (EMT)-related (with high stromal score and hypoxia) and (ii) proliferation-related (with low stromal score) [37]. This classification has prognostic significance, with the best OS in patients with immune-related tumors and the worst OS in patients with EMT-related tumors. Similarly, CC patients with a strong immune response exhibited superior survival [36]. Several other bioinformatics analyses of the CC transcriptomic dataset from TCGA showed the prognostic significance of the expression of immune-related genes and/or deconvoluted levels of infiltrating immune cells [38–43].

In our study, we aimed to investigate possible differences in the expression of immune-related genes between groups of HPV<sup>+</sup> tumors with alternative carcinogenesis pathways distinguished by the level of E2/E5 expression [11]. Since the E2 and E5 proteins influence the expression and function of various human proteins involved in both innate and adaptive immunity, the type of carcinogenesis may be associated with different immune characteristics that influence patient prognosis and response to immunotherapy. To improve the homogeneity of the sample groups, we focused on HPV16<sup>+</sup> CC and HNSCC tumors and excluded nonsquamous tumors from the CC dataset. Unsupervised clustering identified clusters 1 with high expression of immune-related genes and clusters 2 characterized by keratinization, consistent with clustering in previous studies [33–36]. Comparisons between these clusters were used to evaluate differences between tumors with high or low expression of the E2/E5 genes.

The proportion of E2/E5-high tumors was comparable in cluster 1 and cluster 2 (60% and 49%, respectively) in CC, but it was predominant in cluster 1 (93%) and lower in cluster 2 (39%) in HNSCC. Higher expression of E2 and E5 genes (associated with lower integration) in a cluster of tumors with a high immune response was also found in another cohort of HNSCC [35]. Despite this difference in E2/E5 expression between CC and HNSCC, which was accompanied by a difference in immune cell infiltration, OS was comparably better in E2/E5-high tumors in both cancer types.

In the immune-related genes, we took a closer look at the genes that encode proteins that are critical for immune cell infiltration (chemokines and their ligands) and the efficacy of antitumor immunity (immune checkpoints and components of APP pathways). Comparison of HPV<sup>+</sup> and HPV<sup>-</sup> CCs has shown increased expression of APP genes and genes encoding immune checkpoints and markers of immune cells in HPV<sup>+</sup> tumors [44, 45]. Since the E7 oncoprotein downregulates the expression of MHC class I genes and these genes were also upregulated in HPV<sup>+</sup> tumors, the increased expression of the followed genes in HPV<sup>+</sup> tumors was probably associated with higher immune cell infiltration and interferon (IFN)- $\gamma$  production. Similarly, differences in the expression of immune-related genes found in our analysis between samples from clusters 1 and 2 and tumors with high and low E2/E5 expression corresponded to the levels of immune infiltrating cells, and we did not find any gene with significantly different expression between E2/E5 high and E2/E5 low tumors that could be attributed to the level of E2 or E5 expression (i.e., an immune-related gene without differential expression between clusters 1 and 2).

Downregulation of APP pathway components is a well-known mechanism of tumor immune escape that can contribute to tumor progression and lead to resistance to cancer immunotherapy, including blockade of PD-1/PD-L1 signaling [46]. As confirmed by our analysis, low expression of APP components, which is associated with worse prognosis, is common in CC and HNSCC. Therefore, approaches of cancer immunotherapy that take into account this downregulation should be applied against such tumors [47–49]. In tumors with reversible MHC class I downregulation, this expression can be restored by the induction of IFN signaling [47]. However, stimulation of IFN pathways also upregulates compensatory mechanisms that prevent autoimmune damage of tissues. In our analysis, we found increased expression of immune checkpoints in tumors with high immune cell infiltration, and we also noticed high expression of 11 leukocyte immunoglobulin-like receptor (*LILR*) genes. This family encodes both activating

(LILRA1-6) and inhibitory receptors (LILRB1-5) [50]. Some LILR members bind MHC class I molecules. For example, LILRB1 binding is dependent on the expression of  $\beta$ -2 microglobulin and provides a 'don't eat me' signal to macrophages [51]. Since LILRB1 is also expressed on NK cells and its engagement of MHC class I molecules (including nonclassical HLA-G molecules) inhibits cell lysis by NK cells, LILRB1 blockade could be used for immunotherapy of both MHC class I-proficient and MHC class I-deficient HPV-driven tumors.

In our study, we did not find an association of E2 or E5 expression with the immune characteristics of CC and HNSCC tumors or patient survival. Rather, the expression of E6 and E7 genes associated with HPV DNA integration seems to be a major viral factor affecting tumor progression and severity. When the expression of 7 HPV16 proteins (L1, L2, E1, E2, E5, E6, E7) was analyzed in CC, only E6 and E7 were significantly associated with OS, and significantly increased E6 activity was detected in the cluster of patients with a high immune response [35, 36], which is consistent with the finding that the E6 and E7 oncoproteins inhibit keratinocyte differentiation, including keratinization [52, 53]. In addition, spliced E6\* isoforms, which are associated with poorer prognosis, were increased in the high keratinization cluster [35].

Although we did not find immune-related genes differentially expressed in E2/E5-high *versus* E2/E5-low tumors in this analysis of transcriptomic datasets, the level of HPV proteins may affect the level and function of some cellular immune-related proteins, which we were not able to detect in our analysis. For example, the cyclic GMP-AMP synthase (cGAS)/stimulator of interferon genes (STING) signaling pathway, that can be critical for protection against infection and in cancer immunotherapy [54] can be inhibited by several HPV proteins. While the HPV18 E7 protein can directly bind STING [55] and inhibit downstream NF- $\kappa$ B signaling [56], the HPV16 E7 protein destabilizes STING via the mitochondrial NOD-like receptor family member X1 (NLRX1) binding [57]. In addition, both HPV16 and HPV18 E7 proteins downregulate STING and cGAS expression by upregulating the histone methyltransferase SUV39H1 [58]. The E5 protein has also been shown to bind STING and inhibit downstream IFN signaling [59] and the E2 protein downregulates STING and IFN- $\kappa$  expression [27]. Finally, the E6 protein binds and inhibits the interferon regulatory factor-3, a component of the STING pathway [60]. Suppression of STING signaling limits the effect of STING agonists in the treatment of HPV-associated tumors [59, 61, 62], but the relative contribution of individual HPV

proteins and the difference between E2/E5-low and E2/E5-high tumors have not been investigated.

Finally, the E2 and E5 oncoproteins themselves could be used as targets for vaccination. Therapeutic vaccines against HPV-associated tumors are usually based only on the E7 and/or E6 oncoproteins, which are considered indispensable for maintaining the malignant transformation of cells [63]. However, the detection of specific immunity against HPV in HNSCC has shown a broad response of CD4 and CD8 T cells against viral antigens E1, E2, E4, E5, E6, E7, and L1 [64], and E1, E2 and E5 have been identified as major targets of intratumoral CD8 T cells [65, 66]. T-cell responses to E2 are also common in cervical premalignant and malignant lesions [67, 68]. Vaccination against E2 may be particularly beneficial in patients with E2/E5-high tumors. For example, a virus-based vaccine carrying conserved elements of HPV16/18/31/52/58 E1/E2/E4/E6/E7 could be applied [69].

## Conclusions

Our results suggest that while the regulation of expression of immune-related genes by the viral E2 and E5 proteins, which was found in transfected/transduced keratinocytes, is probably important for evasion of the immune system and reproduction of HPVs in non-malignant lesions, expression of E2 and E5 is not the major determinant of immunological characteristics of tumors, especially in CC. The major role of E2 and E5 expression in carcinogenesis may be in deregulation of the E6/E7 oncogenes after E2 downregulation and/or modulation of the function of some cellular proteins.

## Abbreviations

APP	Antigen processing and presentation
CC	Cervical cancer
cGAS	Cyclic GMP-AMP synthase
EMT	Epithelial-mesenchymal transition
FPKM-UQ	Fragments per kilobase of transcript per million mapped reads upper quartile
GO	Gene Ontology
HNSCC	Head and neck squamous cell carcinoma
HPV	Human papillomavirus
IL	Interleukin
IFN	Interferon
IPS	Immunophenoscore
LILR	Leukocyte immunoglobulin-like receptor
MHC	Major histocompatibility complex
MSigDB	Molecular Signatures Database
NK	Natural killer
NLRX1	NOD-like receptor family member X1
OS	Overall survival
STING	Stimulator of interferon genes
TCGA	The Cancer Genome Atlas
TCIA	The Cancer Immunome Atlas
TGF	Transforming growth factor

## Supplementary Information

The online version contains supplementary material available at <https://doi.org/10.1186/s12985-023-02241-6>.

**Additional file 1 Table S1** CC and HNSCC samples from TCGA used in the study.

### Acknowledgements

Not applicable

### Author contributions

MS designed and guided the study. MS and JN performed the analysis and wrote the manuscript. Both authors revised the manuscript and approved its final version.

### Funding

This research was funded by the European Union—Next Generation EU—the project National Institute of Virology and Bacteriology (the program EXCELES), grant number LX22NPO5103, and the Czech Science Foundation, grant number GA19-00816S.

### Availability of data and materials

All data generated or analyzed during this study are included in this published article and its supplementary information file.

### Declarations

#### Ethics approval and consent to participate

Not applicable.

#### Consent for publication

Not applicable.

#### Competing interests

The authors declare that they have no competing interests.

Received: 10 August 2023 Accepted: 14 November 2023

Published online: 04 December 2023

## References

- de Martel C, Georges D, Bray F, Ferlay J, Clifford GM. Global burden of cancer attributable to infections in 2018: a worldwide incidence analysis. *Lancet Glob Health*. 2020;8:e180–90.
- McKaig RG, Baric RS, Olshan AF. Human papillomavirus and head and neck cancer: epidemiology and molecular biology. *Head Neck*. 1998;20:250–65.
- Schache AG, Powell NG, Cuschieri KS, Robinson M, Leary S, Mehanna H, et al. HPV-related oropharynx cancer in the United Kingdom: an evolution in the understanding of disease etiology. *Cancer Res*. 2016;76:6598–606.
- Muzaffar J, Bari S, Kirtane K, Chung CH. Recent advances and future directions in clinical management of head and neck squamous cell carcinoma. *Cancers*. 2021;13:338.
- Brisson M, Kim JJ, Canfell K, Drolet M, Gingras G, Burger EA, et al. Impact of HPV vaccination and cervical screening on cervical cancer elimination: a comparative modelling analysis in 78 low-income and lower-middle-income countries. *Lancet Lond Engl*. 2020;395:575–90.
- Muñoz N, Bosch FX, de Sanjosé S, Herrero R, Castellsagué X, Shah KV, et al. Epidemiologic classification of human papillomavirus types associated with cervical cancer. *N Engl J Med*. 2003;348:518–27.
- Basukala O, Banks L. The not-so-good, the bad and the ugly: HPV E5, E6 and E7 oncoproteins in the orchestration of carcinogenesis. *Viruses*. 2021;13:1892.
- Roden RBS, Stern PL. Opportunities and challenges for human papillomavirus vaccination in cancer. *Nat Rev Cancer*. 2018;18:240–54.
- Della Fera AN, Warburton A, Coursey TL, Khurana S, McBride AA. Persistent human papillomavirus infection. *Viruses*. 2021;13:321.
- Fan J, Fu Y, Peng W, Li X, Shen Y, Guo E, et al. Multi-omics characterization of silent and productive HPV integration in cervical cancer. *Cell Genomics*. 2023;3: 100211.
- Ren S, Gaykalova DA, Guo T, Favorov AV, Fertig EJ, Tamayo P, et al. HPV E2, E4, E5 drive alternative carcinogenic pathways in HPV positive cancers. *Oncogene*. 2020;39:6327–39.
- Massimi P, Pim D, Bertoli C, Bouvard V, Banks L. Interaction between the HPV-16 E2 transcriptional activator and p53. *Oncogene*. 1999;18:7748–54.
- Muller M, Jacob Y, Jones L, Weiss A, Brino L, Chantier T, et al. Large scale genotype comparison of human papillomavirus E2-host interaction networks provides new insights for E2 molecular functions. *PLoS Pathog*. 2012;8: e1002761.
- Scarth JA, Patterson MR, Morgan EL, Macdonald A. The human papillomavirus oncoproteins: a review of the host pathways targeted on the road to transformation. *J Gen Virol*. 2021;2021(102): 001540.
- Metsalu T, Vilo J. ClustVis: a web tool for visualizing clustering of multivariate data using principal component analysis and heatmap. *Nucleic Acids Res*. 2015;43:W566–70.
- Cerami E, Gao J, Dogrusoz U, Gross BE, Sumer SO, Aksoy BA, et al. The cBio cancer genomics portal: an open platform for exploring multidimensional cancer genomics data. *Cancer Discov*. 2012;2:401–4.
- Gao J, Aksoy BA, Dogrusoz U, Dresdner G, Gross B, Sumer SO, et al. Integrative analysis of complex cancer genomics and clinical profiles using the cBioPortal. *Sci Signal*. 2013;6:11.
- Chen EY, Tan CM, Kou Y, Duan Q, Wang Z, Meirelles GV, et al. Enrichr: interactive and collaborative HTML5 gene list enrichment analysis tool. *BMC Bioinformatics*. 2013;14:128.
- Kuleshov MV, Jones MR, Rouillard AD, Fernandez NF, Duan Q, Wang Z, et al. Enrichr: a comprehensive gene set enrichment analysis web server 2016 update. *Nucleic Acids Res*. 2016;44:W90–97.
- Xie Z, Bailey A, Kuleshov MV, Clarke DJB, Evangelista JE, Jenkins SL, et al. Gene set knowledge discovery with Enrichr. *Curr Protoc*. 2021;1: e90.
- Newman AM, Steen CB, Liu CL, Gentles AJ, Chaudhuri AA, Scherer F, et al. Determining cell type abundance and expression from bulk tissues with digital cytometry. *Nat Biotechnol*. 2019;37:773–82.
- Charoentong P, Finotello F, Angelova M, Mayer C, Efremova M, Rieder D, et al. Pan-cancer immunogenomic analyses reveal genotype-immunophenotype relationships and predictors of response to checkpoint blockade. *Cell Rep*. 2017;18:248–62.
- Bosch FX, Manos MM, Muñoz N, Sherman M, Jansen AM, Peto J, et al. Prevalence of human papillomavirus in cervical cancer: a worldwide perspective. *J Natl Cancer Inst*. 1995;87:796–802.
- Bruni D, Angell HK, Galon J. The immune contexture and Immunoscore in cancer prognosis and therapeutic efficacy. *Nat Rev Cancer*. 2020;20:662–80.
- Campos-Parra AD, Pérez-Quintanilla M, Martínez-Gutierrez AD, Pérez-Montiel D, Coronel-Martínez J, Millán-Catalán O, et al. Molecular differences between squamous cell carcinoma and adenocarcinoma cervical cancer subtypes: potential prognostic biomarkers. *Curr Oncol*. 2022;29:4689–702.
- Chakravarthy A, Reddin I, Henderson S, Dong C, Kirkwood N, Jeyakumar M, et al. Integrated analysis of cervical squamous cell carcinoma cohorts from three continents reveals conserved subtypes of prognostic significance. *Nat Commun*. 2022;13:5818.
- Sunthamala N, Thierry F, Teissier S, Pientong C, Kongyingyoes B, Tangsiriwatthana T, et al. E2 proteins of high risk human papillomaviruses down-modulate STING and IFN- $\kappa$  transcription in keratinocytes. *PLoS ONE*. 2014;9: e91473.
- Evans MR, James CD, Bristol ML, Nulton TJ, Wang X, Kaur N, et al. Human papillomavirus 16 E2 regulates keratinocyte gene expression relevant to cancer and the viral life cycle. *J Virol*. 2019;93:e01941–e2018.
- Raikhy G, Woodby BL, Scott ML, Shin G, Myers JE, Scott RS, et al. Suppression of stromal interferon signaling by human papillomavirus 16. *J Virol*. 2019;93:e00458–e519.
- French D, Belleudi F, Mauro MV, Mazzetta F, Raffa S, Fabiano V, et al. Expression of HPV16 E5 down-modulates the TGF $\beta$  signaling pathway. *Mol Cancer*. 2013;12:38.

31. Scott ML, Woodby BL, Ulicny J, Raikhy G, Orr AW, Songcock WK, et al. Human papillomavirus 16 E5 inhibits interferon signaling and supports episomal viral maintenance. *J Virol*. 2020;94:e01582-e1619.
32. Qin T, Li S, Henry LE, Liu S, Sartor MA. Molecular tumor subtypes of HPV-positive head and neck cancers: biological characteristics and implications for clinical outcomes. *Cancers*. 2021;13:2721.
33. Pyeon D, Newton MA, Lambert PF, den Boon JA, Sengupta S, Marsit CJ, et al. Fundamental differences in cell cycle deregulation in human papillomavirus-positive and human papillomavirus-negative head/neck and cervical cancers. *Cancer Res*. 2007;67:4605–19.
34. Keck MK, Zuo Z, Khattri A, Stricker TP, Brown CD, Imaniguli M, et al. Integrative analysis of head and neck cancer identifies two biologically distinct HPV and three non-HPV subtypes. *Clin Cancer Res*. 2015;21:870–81.
35. Zhang Y, Koneva LA, Virani S, Arthur AE, Virani A, Hall PB, et al. Subtypes of HPV-positive head and neck cancers are associated with HPV characteristics, copy number alterations, PIK3CA mutation, and pathway signatures. *Clin Cancer Res*. 2016;22:4735–45.
36. Lu X, Jiang L, Zhang L, Zhu Y, Hu W, Wang J, et al. Immune signature-based subtypes of cervical squamous cell carcinoma tightly associated with human papillomavirus type 16 expression, molecular features, and clinical outcome. *Neoplasia*. 2019;21:591–601.
37. Locati LD, Serafini MS, Iannò MF, Careno A, Orlandi E, Resteghini C, et al. Mining of self-organizing map gene-expression portraits reveals prognostic stratification of HPV-positive head and neck squamous cell carcinoma. *Cancers*. 2019;11:1057.
38. Wang J, Li Z, Gao A, Wen Q, Sun Y. The prognostic landscape of tumor-infiltrating immune cells in cervical cancer. *Biomed Pharmacother*. 2019;120: 109444.
39. He M, Wang Y, Zhang G, Cao K, Yang M, Liu H. The prognostic significance of tumor-infiltrating lymphocytes in cervical cancer. *J Gynecol Oncol*. 2021;32: e32.
40. Yu S, Li X, Zhang J, Wu S. Development of a novel immune infiltration-based gene signature to predict prognosis and immunotherapy response of patients with cervical cancer. *Front Immunol*. 2021;12: 709493.
41. Zuo Z, Xiong J, Zeng C, Jiang Y, Xiong K, Tao H, et al. Exploration of a robust and prognostic immune related gene signature for cervical squamous cell carcinoma. *Front Mol Biosci*. 2021;8: 625470.
42. Li X, Cheng Y, Cheng Y, Shi H. Transcriptome analysis reveals the immune infiltration profiles in cervical cancer and identifies KRT23 as an immunotherapeutic target. *Front Oncol*. 2022;12: 779356.
43. Wang N, Nanding A, Jia X, Wang Y, Yang C, Fan J, et al. Mining of immunological and prognostic-related biomarker for cervical cancer based on immune cell signatures. *Front Immunol*. 2022;13: 993118.
44. Evans AM, Salnikov M, Gameiro SF, Maleki Vareki S, Mymryk JS. HPV-positive and -negative cervical cancers are immunologically distinct. *J Clin Med*. 2022;11:4825.
45. Evans AM, Salnikov M, Tessier TM, Mymryk JS. Reduced MHC class I and II expression in HPV-negative vs HPV-positive cervical cancers. *Cells*. 2022;11:3911.
46. Dhatchinamoorthy K, Colbert JD, Rock KL. Cancer immune evasion through loss of MHC class I antigen presentation. *Front Immunol*. 2021;12: 636568.
47. Cornel AM, Mimpfen IL, Nierkens S. MHC class I downregulation in cancer: underlying mechanisms and potential targets for cancer immunotherapy. *Cancers*. 2020;12:1760.
48. Shklovskaya E, Rizos H. MHC class I deficiency in solid tumors and therapeutic strategies to overcome it. *Int J Mol Sci*. 2021;22:6741.
49. de Vries NL, van de Haar J, Veninga V, Chalabi M, Ijsselstein ME, van der Ploeg M, et al.  $\gamma\delta$  T cells are effectors of immunotherapy in cancers with HLA class I defects. *Nature*. 2023;613:743–50.
50. Abdallah F, Coindre S, Gardet M, Meurisse F, Naji A, Suganuma N, et al. Leukocyte immunoglobulin-like receptors in regulating the immune response in infectious diseases: a window of opportunity to pathogen persistence and a sound target in therapeutics. *Front Immunol*. 2021;12: 717998.
51. Barkal AA, Weiskopf K, Kao KS, Gordon SR, Rosental B, Yiu YY, et al. Engagement of MHC class I by the inhibitory receptor LILRB1 suppresses macrophages and is a target of cancer immunotherapy. *Nat Immunol*. 2018;19:76–84.
52. Gyöngyösi E, Szalmás A, Ferenczi A, Póloska S, Kónya J, Veress G. Transcriptional regulation of genes involved in keratinocyte differentiation by human papillomavirus 16 oncoproteins. *Arch Virol*. 2015;160:389–98.
53. Dust K, Carpenter M, Chen JC, Grant C, McCorrister S, Westmacott GR, et al. Human papillomavirus 16 E6 and E7 oncoproteins alter the abundance of proteins associated with DNA damage response, immune signaling and epidermal differentiation. *Viruses*. 2022;14:1764.
54. Zeng P-H, Yin W-J. The cGAS/STING signaling pathway: a cross-talk of infection, senescence and tumors. *Cell Cycle*. 2023;22:38–56.
55. Lau L, Gray EE, Brunette RL, Stetson DB. DNA tumor virus oncoproteins antagonize the cGAS-STING DNA-sensing pathway. *Science*. 2015;350:568–71.
56. Lou M, Huang D, Zhou Z, Shi X, Wu M, Rui Y, et al. DNA virus oncoprotein HPV18 E7 selectively antagonizes cGAS-STING-triggered innate immune activation. *J Med Virol*. 2023;95: e28310.
57. Luo X, Donnelly CR, Gong W, Heath BR, Hao Y, Donnelly LA, et al. HPV16 drives cancer immune escape via NLRX1-mediated degradation of STING. *J Clin Invest*. 2020;130:1635–52.
58. Lo Cigno I, Calati F, Borgogna C, Zevini A, Albertini S, Martuscelli L, et al. Human papillomavirus E7 oncoprotein subverts host innate immunity via SUV39H1-mediated epigenetic silencing of immune sensor genes. *J Virol*. 2020;94:e01812-e1819.
59. Miyauchi S, Kim SS, Jones RN, Zhang L, Guram K, Sharma S, et al. Human papillomavirus E5 suppresses immunity via inhibition of the immunoproteasome and STING pathway. *Cell Rep*. 2023;42: 112508.
60. Ronco LV, Karpova AY, Vidal M, Howley PM. Human papillomavirus 16 E6 oncoprotein binds to interferon regulatory factor-3 and inhibits its transcriptional activity. *Genes Dev*. 1998;12:2061–72.
61. Shaikh MH, Bortnik V, McMillan NAJ, Idris A. cGAS-STING responses are dampened in high-risk HPV type 16 positive head and neck squamous cell carcinoma cells. *Microb Pathog*. 2019;132:162–5.
62. Bortnik V, Wu M, Julcher B, Salinas A, Nikolic I, Simpson KJ, et al. Loss of HPV type 16 E7 restores cGAS-STING responses in human papilloma virus-positive oropharyngeal squamous cell carcinomas cells. *J Microbiol Immunol Infect*. 2021;54:733–9.
63. Gardella B, Gritti A, Soleymannejadian E, Pasquali MF, Riemma G, La Verde M, et al. New perspectives in therapeutic vaccines for HPV: a critical review. *Medicina*. 2022;58:860.
64. Bhatt KH, Neller MA, Srihari S, Crooks P, Lekieffre L, Aftab BT, et al. Profiling HPV-16-specific T cell responses reveals broad antigen reactivities in oropharyngeal cancer patients. *J Exp Med*. 2020;217: e20200389.
65. Eberhardt CS, Kissick HT, Patel MR, Cardenas MA, Prokhnevskaya N, Obeng RC, et al. Functional HPV-specific PD-1+ stem-like CD8 T cells in head and neck cancer. *Nature*. 2021;597:279–84.
66. McInnis C, Bhatia S, Vijaykumar B, Tian Q, Sun Y, Leistriz-Edwards D, et al. Identification of HPV16 E1 and E2-specific T cells in the oropharyngeal cancer tumor microenvironment. *J Immunother Cancer*. 2023;11: e006721.
67. Dillon S, Sasagawa T, Crawford A, Prestidge J, Inder MK, Jerram J, et al. Resolution of cervical dysplasia is associated with T-cell proliferative responses to human papillomavirus type 16 E2. *J Gen Virol*. 2007;88:803–13.
68. Paaso A, Koskimaa H-M, Welters MJ, Grénman S, Syrjänen K, van der Burg SH, et al. Cell mediated immunity against HPV16 E2, E6 and E7 peptides in women with incident CIN and in constantly HPV-negative women followed-up for 10-years. *J Transl Med*. 2015;13:163.
69. Yan F, Cowell LG, Tomkies A, Day AT. Therapeutic vaccination for HPV-mediated cancers. *Curr Otorhinolaryngol Rep*. 2023;1:44–61.

## Publisher's Note

Springer Nature remains neutral with regard to jurisdictional claims in published maps and institutional affiliations.